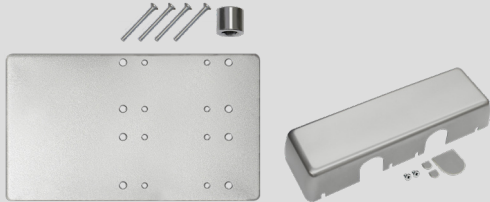


## CONCR441 - DUAL CLOSER CONNECTOR KIT

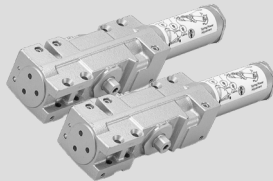
### CONCR441KIT

Includes:  
Steel Connector, Sleeve Nut, Steel Mounting Plate,  
Screws and Primary Closer Cover  
**(Does not include closers)**



### CR441 / TNDM

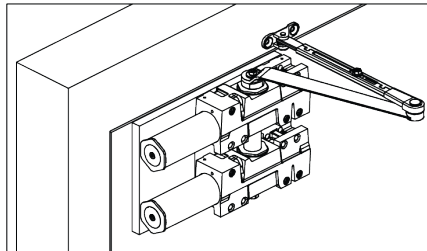
Includes:  
CONCR441KIT,  
2 x CR441 Door Closers  
**(Includes 2 complete boxes of regular door closers)**



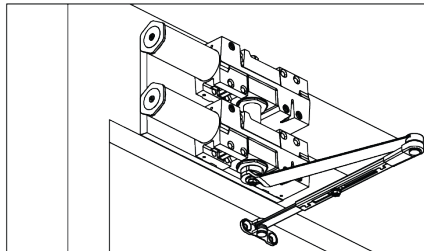
3 HOUR FIRE RATED  
UL10C, UBC7-2-1997



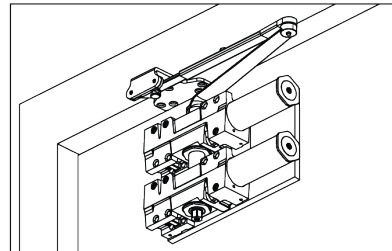
**REGULAR ARM  
(PULL SIDE) MOUNTING**



**TOP JAMB  
(PUSH SIDE) MOUNTING**



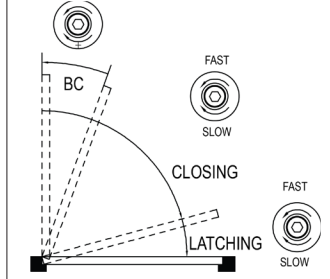
**PARALLEL ARM  
(PUSH SIDE) MOUNTING**



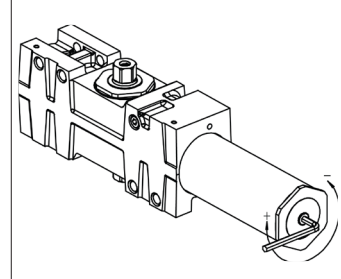
**POWER ADJUSTMENT AND DOOR WIDTH**

DOOR MAX WIDTH		ADJUSTING NUT AND TURNS
EXTERIOR	INTERIOR	
----	5 lb-f	-5 (counter clockwise)
8 lb-f	34" (864)	-2 (counter clockwise)
30" (762)	38" (962)	0
36" (914)	48" (1219)	+5 (clockwise)
42" (1067)	54" (1372)	+10 (clockwise)
48" (1219)	60" (1524)	+15 (clockwise)

**RUNNING AND BC ADJUSTMENT**



**POWER ADJUSTMENT**



When a single door closer is not strong enough to close a door weighing 260 ~ 520 lbs, the **CONCR441KIT** allows two CR441 Series Grade 1 Door Closers to work as one, by connecting them together with the high-tensile strength steel connector sleeve nut on a steel mounting plate, doubling the strength and the door weight capacity while maintaining the opening force.

### FEATURES

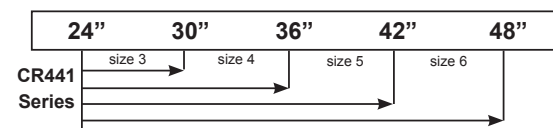
- Connects Two CR441 Series Door Closers
- For Doors 260 ~ 520 lbs Weight
- Can be Used for Regular Arm, Top Jamb or Parallel Arm Mounting
- Easy Mounting
- High Tensile Strength Steel Connector Sleeve Nut
- 12 1/8" x 7" x 3/16" Steel Mounting Plate
- 4" x 1/4" - 20" x 2 1/8" Mounting Screws

### TABLE OF SIZES

Closing power of CR441 closers may be adjusted 50%

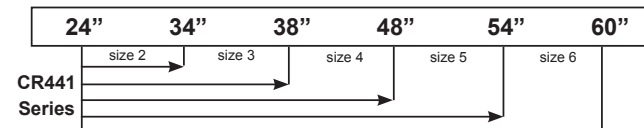
→ Shows recommended range of door width for closer size.

#### EXTERIOR (and VESTIBULE) DOOR WIDTH



Minimum Door Width

#### INTERIOR DOOR WIDTH



Minimum Door Width

Adjustable Size 1 thru 6